



# LE QUARTIER FRANÇAIS

FRANSCHHOEK · SOUTH AFRICA

LEE U C O L L E C T I O N

## FACT SHEET



## HOTEL OVERVIEW

Le Quartier Français, a romantic 25-room boutique hotel, located in the heart of Franschhoek. The property is the ideal base from which to explore the surrounding Winelands, or you can simply walk into the village to discover its quaint charms. The extraordinary staff, luxuriously comfortable rooms and attention to detail ensure that this auberge is the ultimate destination.

## LOCATION

**Physical address** Cnr Berg & Wilhelmina St., Franschhoek 7690  
**Postal address** PO Box 188, Franschhoek 7690  
**Telephone** +27 (0) 21 876 2151 / +27 (0) 21 492 2222  
**Website** [www.leeucollection.com](http://www.leeucollection.com)  
**Location** Franschhoek, Western Cape, South Africa  
**GPS coordinates** 33°54'22.4" S 19°05'59.8" E

## DISTANCE FROM HOTEL

From	Distance	Driving Time
Cape Town CBD	73 km	60 minutes
Cape Town International Airport	68 km	55 minutes
Franschhoek Village	3 km	3 minutes

Please note that time and distances are approximate and may differ according to route and traffic conditions.

## CLIMATE

Franschhoek enjoys a mild Mediterranean climate characterised by warm summers (average temperatures range from 15°C to 30°C/60°F to 85°F) and cool winters with some rainfall (average temperatures range from 8°C to 19°C/48°F to 66°F). It is the perfect destination for ‘swallows’, as summer falls during the northern hemisphere’s winter. WHAT TO PACK Layering is the way to go as weather can turn from warm during the day to cold at night in both summer and winter. Summer: A swimsuit is essential, along with a sun hat, sunscreen, sunglasses, and cool, light clothing. Light jackets or sweaters are recommended for the evenings. Winter: Daytime clothing can be lighter, but evenings require woollens.

## FRANSCHHOEK

The breathtakingly beautiful Franschhoek Valley is renowned as one of the world’s great food and wine destinations. Settled by the French Huguenots in 1688, it has retained its Gallic charm and character. At the heart of the valley is the romantic village of Franschhoek.

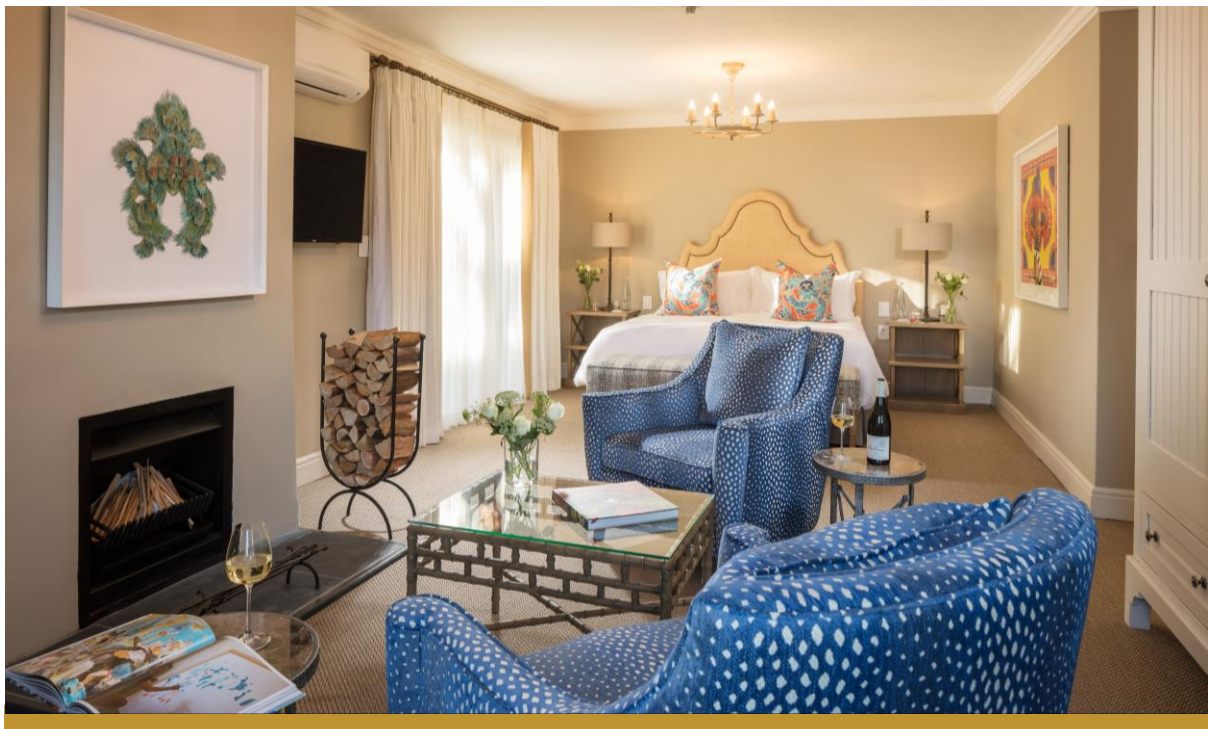
Within easy driving distance from Franschhoek, one can enjoy the pristine beaches of the Cape, play a round of golf or experience some of the best land-based whale watching in Hermanus.

## ROOMS AND SUITES

All of the rooms and suites at this luxury destination have been refurbished to reflect a sophisticated and fresh colourful palette.

CATEGORIES	Size(m <sup>2</sup> /ft <sup>2</sup> )	No of rooms
Auberge	40/430	7
Grande	50/538	6
Petite Garden Suite	45/484	6

CATEGORIES	Size (m <sup>2</sup> /ft <sup>2</sup> )	No of rooms
Pool Suites	80/861	2
Four Quarter Suite	110/1184	4



## ROOM FACILITIES

Rooms are equipped with premium technology and include:

- Media hub, high-speed Wi-Fi access, including international sockets/adapters
- Writing desk
- Air conditioning
- Underfloor in all the bathrooms
- High-definition flat-screen smart television
- Electronic safe
- Bathrobes and slippers
- Double vanities in selected rooms
- Heated towel rails
- Hairdryer
- Voltage 220V – with built-in international adapter plugs and USB points

## COMPLIMENTARY SERVICES

- Breakfast (07h30 – 10h30)
- In-room tea and coffee facilities
- Unlimited Internet access
- All national phone calls
- Full-service concierge
- Valet parking/secure limited parking area
- Scheduled shuttle service between the properties
- Great Heart wine tasting at The Wine Boutique, per guest per stay

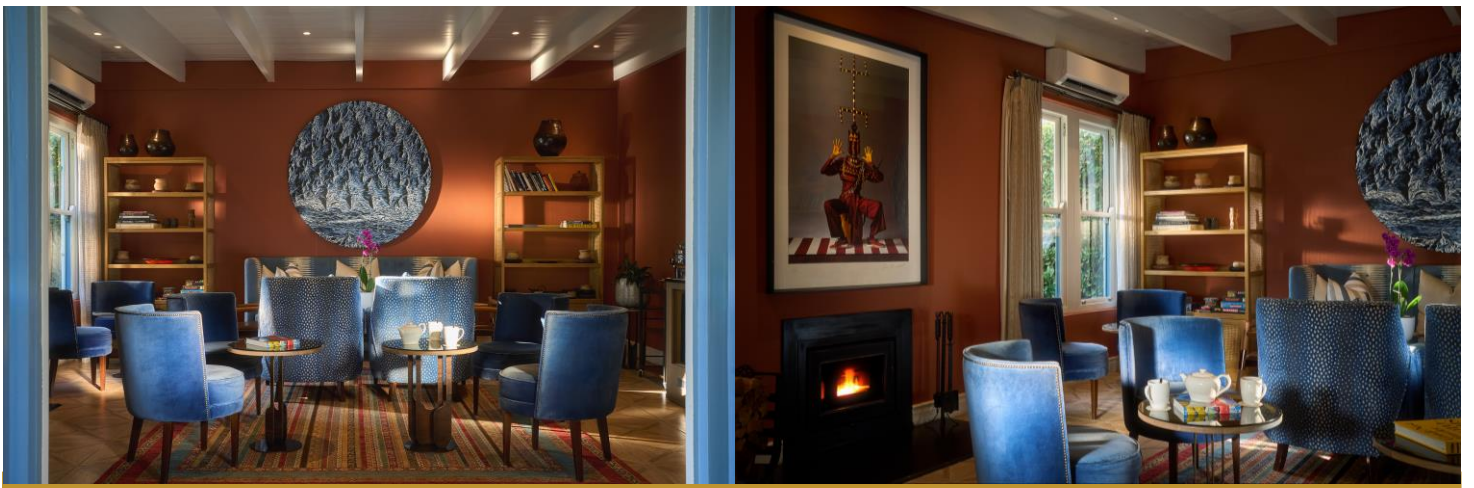
Excluded

- Other meals
- In-room dining
- International phone calls
- Dry cleaning/laundry
- Transport (helicopter or shuttle)
- Gratuities



## THE LOUNGE

Visitors can enjoy welcome drinks, sundowners, or pre-dinner drinks in the Lounge at Le Quartier Français with a variety of beverages available for purchase from the Honesty Bar.



## DINING

---

Protégé, a casual-style fine dining eatery recognises talented young chefs and provides them with an opportunity to put themselves on the map. Guided by Scot, Chef Proprietor of La Colombe, the restaurant offers an experience that the residents can call “home”, the menu is seasonal and highlights fresh and local produce.



Épice is another venture from the La Colombe team. Serving an array of delectably curated dishes, the fine-dining restaurant features a flavour-packed menu inspired by the team’s culinary expedition to India, as well as memories of travels through Spain, Japan, Mexico, Denmark and the US.



At Leeu Estates’ The Dining Room (a sister Franschoek property), guests staying at any of our Leeu Collection properties can look forward to an avant-garde menu as an exclusive in-house dining option, with dishes that are as authentic as they are innovative. From our gardens to your plate our chefs use the seasons as their inspiration while preparing dishes that are as full of flavour as they are beautiful, with many of the ingredients coming from the Leeu Locally Grown initiative.

Whilst at the end of a scenic pathway, La Petite Colombe (sister restaurant to La Colombe in Constantia), offers a world-class dining experience synonymous with this world-renowned culinary collective.

## GREAT HEART WINE BOUTIQUE

---

The Great Heart Wines Boutique recalibrates the notion of an intimate and personalised wine tasting with availability to sit four guests at a time for Le Quartier Français and Leeu House guests only. Non-resident guests are welcome to enjoy the tasting option by making a booking at Protégé (right across from the Boutique). These wines can also be purchased at the Boutique.

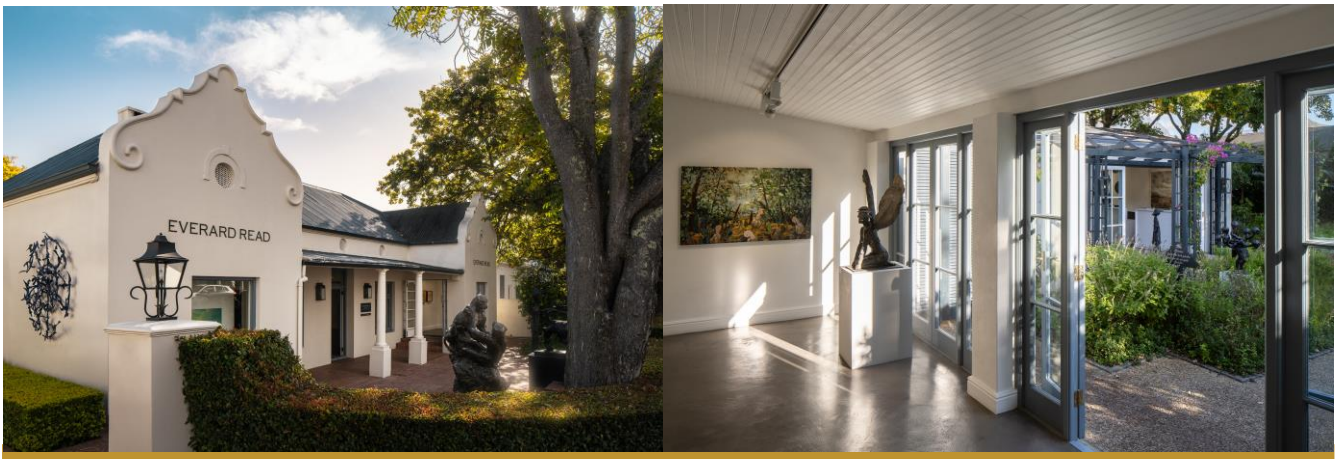
Great Heart Wines is a staff empowerment project of Mullineux & Leeu Family Wines.



## EVERARD READ GALLERY - FRANSCHHOEK

---

Its sixth gallery, Everard Read Franschhoek, in partnership with Leeu Collection, is a considered space showing the best modern and contemporary artworks by southern African artists. Adjacent to Le Quartier Français, the gallery includes a sculpture garden for monumental works interspersed with herbs and vegetables, the first of its kind in South Africa. The fresh produce from the garden features on the menus of the Leeu Collection's restaurants.



## LEISURE FACILITIES

---

- Serene and secluded beautifully landscaped gardens with strategically placed sculptures
- A 15-metre (49-foot) swimming pool with a shaded terrace and mountain views
- Leeu Spa by Healing Earth on Leeu Estates
- Great Heart Wine Boutique
- Large chess board
- Leeu Spa by Healing Earth on Leeu Estates
- Everard Read Franschoek, adjacent to the hotel
- River Walk picnics on Leeu Estates
- Leeu Locally Grown Garden Walks at Leeu Estates
- Mullineux & Leeu Family Wines Wine Studio on Leeu Estates
- Nature trails (river, mountain and vineyard) on Leeu Estates
- Everard Read Leeu Estates on Leeu Estates



## RESERVATIONS

---

Children are welcome and can be accommodated in cots and on sofa beds in selected rooms.

We accept American Express, Diners Club, MasterCard and Visa.

Check-in 14h00 | Check out 11h00

**Hotel** +27 (0) 21 876 2151

**Reservations** +27 (0) 21 492 2222

**Email** [reservations@leeucollection.com](mailto:reservations@leeucollection.com)

You may sign up to our [newsletter here](#) and follow our social media platforms, [Facebook](#), [Instagram](#) and [Twitter](#) to stay up to date with our on-property experiences.